

Brijesh Chandra Srivastava

A Legacy in Engineering India's Lifelines

Born 2nd March 1963

36+ Years of Infrastructure Leadership



36+

Years of Professional Experience

IIT

Roorkee Alumnus (B.E. & M.E. Civil Engineering)

32

Years at RITES Ltd.
(Retired General Manager)

Expert

In Railway, Metro & Power Plant Infrastructure

A distinguished civil engineer recognized for delivering high-value, complex infrastructure projects from concept to commissioning. A proven Project Manager with deep technical knowledge, hands-on field experience, and a strong leadership record focused on technical excellence, quality, and sustainable value.

Forged at a Legacy Institution



IIT Roorkee: An Alumnus of Asia's Oldest Engineering Institution

Established in 1847 as the Thomason College of Civil Engineering to train engineers for the historic Ganga Canal project.

NIDC: Building India's Industrial Base (1988-1991)

Highlights of his role as Assistant Engineer (Industrial & Civil Works), including:



Main Production Building for Hindustan Cables Limited (HCL).

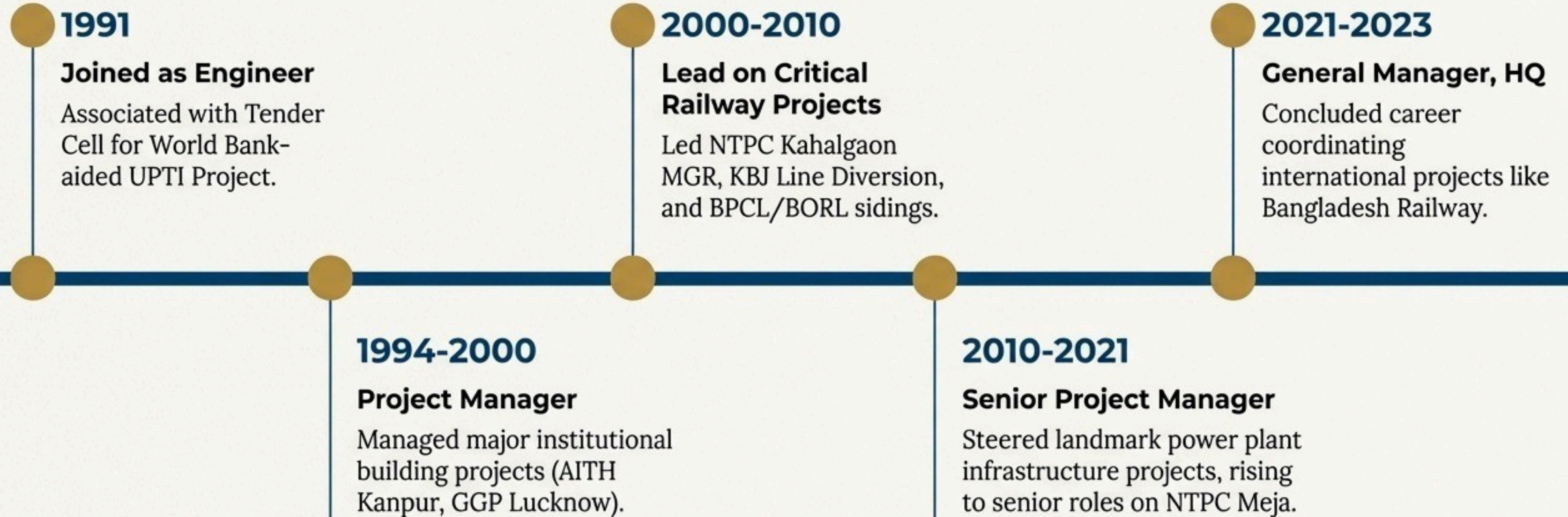


Modernization of Stockyard for Steel Authority of India Ltd. (SAIL).



Water Supply System for Ordnance Factory, Bolangir.

32 Years of Nation-Building with RITES Ltd.



A career defined by progressive responsibility, leading a wide spectrum of railway and infrastructure projects across India from field execution to headquarters strategy.

Engineering the Lifelines for India's Energy Sector

Specialized in delivering end-to-end railway siding projects for India's critical Thermal Power Plants and Refineries, ensuring uninterrupted fuel supply and operational efficiency.

UPRVUNL Harduaganj

Augmentation of critical rail infrastructure for a major state power utility.

Harduaganj, Uttar Pradesh

NTPC Meja

End-to-end PMC for a 1320 MW Super-critical Thermal Power Plant's coal logistics.

Meja, Uttar Pradesh

NTPC Kahalgaon

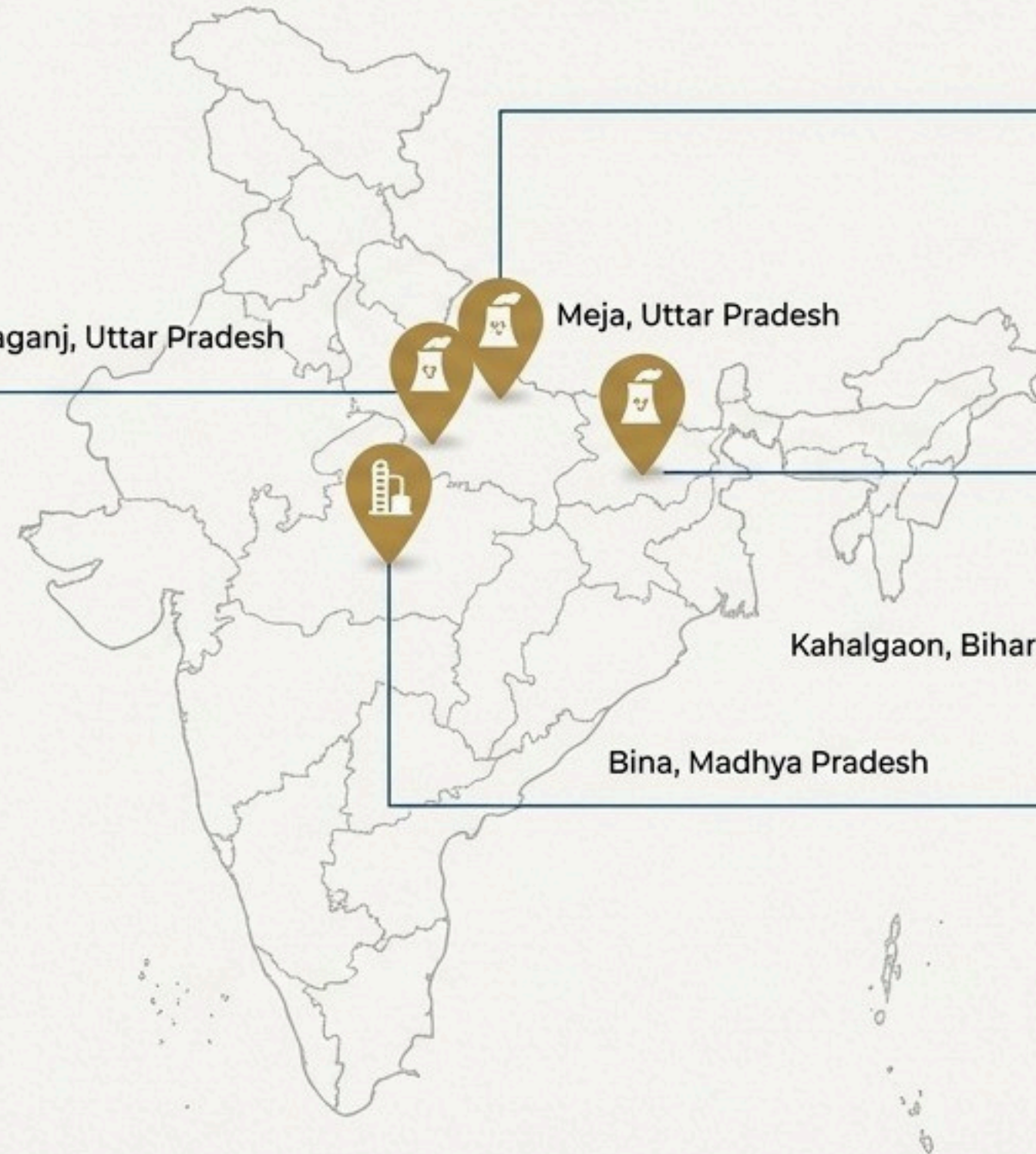
Strategic diversion of MGR system to ensure flood resilience.

Kahalgaon, Bihar

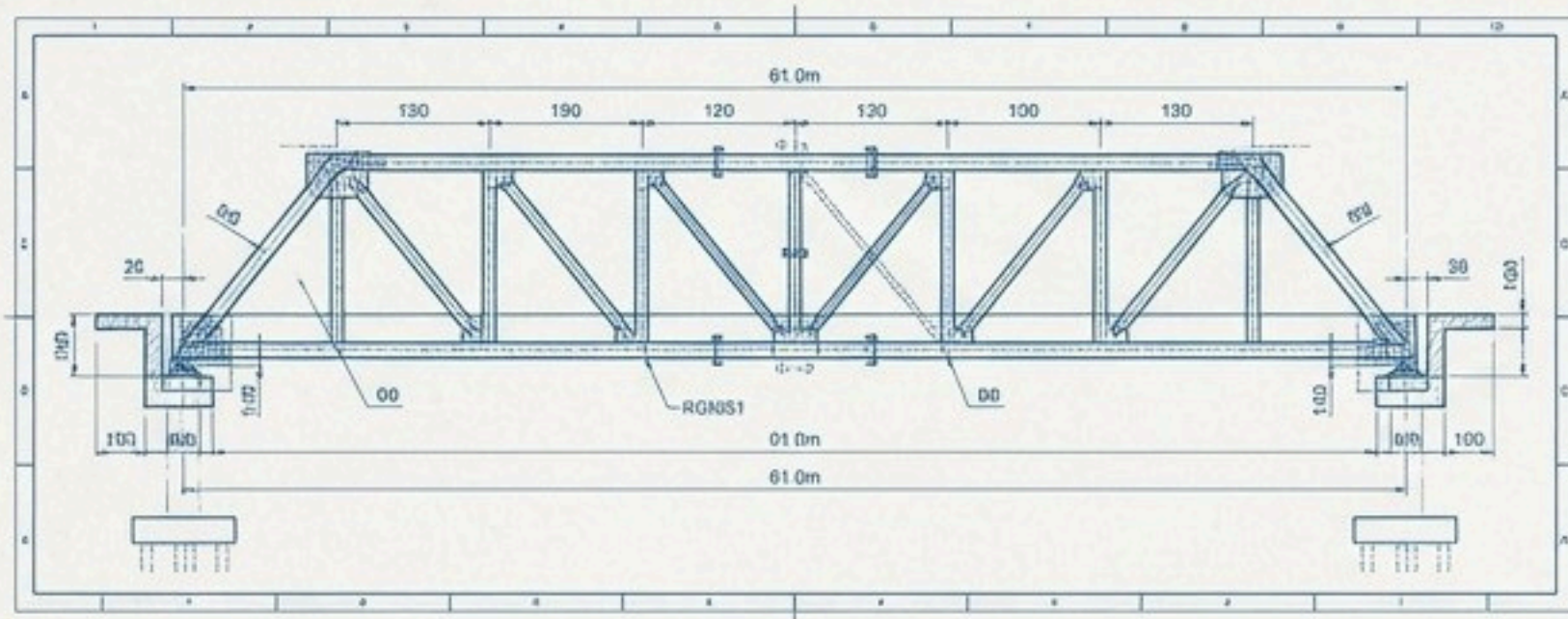
BPCL & BORL, Bina

Twin sidings for national petroleum and refinery giants, involving massive earthworks.

Bina, Madhya Pradesh



Project Deep Dive: The NTPC Meja Siding — A Landmark in Coal Logistics



The Challenge

To conceive, design, and execute a dedicated, high-capacity coal transportation system for a 1320 MW super-critical thermal power plant, a joint venture of NTPC and UPRVUNL.

The Solution

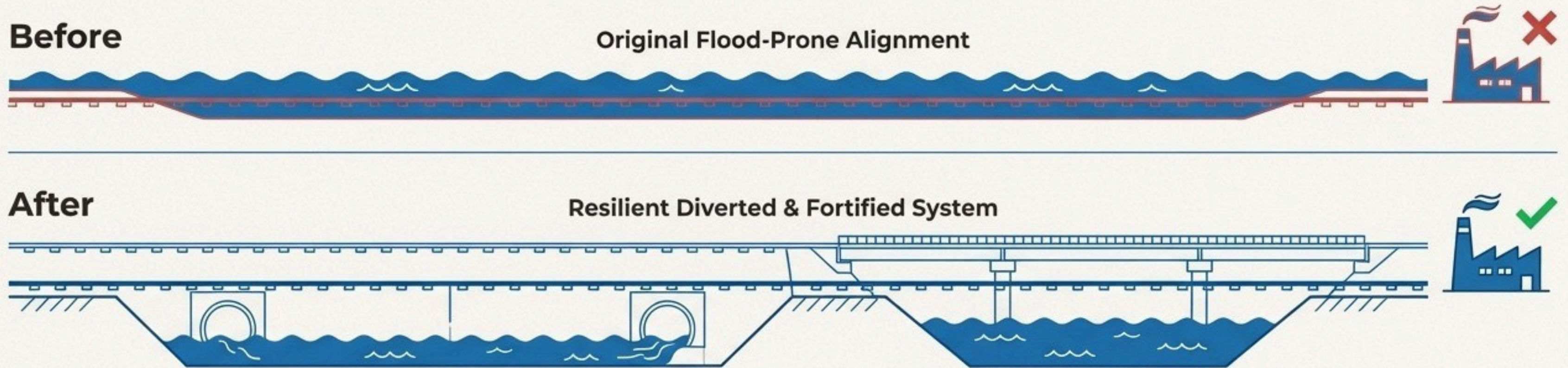
Executed an end-to-end Project Management Consultancy (PMC) for a ~60 km railway siding. Key features included:

- A 61.0m DFC-loading open web girder Rail-over-Rail bridge.
- A 2.0 km, 78-span elevated RCC viaduct.
- Complex interfacing with Indian Railways, DFC, S&T, and OHE.

The Impact

Ensured uninterrupted fuel supply for a plant of national significance, achieving the first loaded coal rake movement in December 2018. The project, with a sanctioned cost of ₹853 crore, stands as a model of complex infrastructural delivery.

Project Deep Dive: The Kahalgaon MGR Diversion — Engineering Resilience



The Challenge

The Merry-Go-Round (MGR) railway system, the sole coal artery for NTPC Kahalgaon, was repeatedly crippled by severe floods, causing prolonged plant shutdowns.

The Solution

Led the PMC for a strategic 6 km diversion of the railway line onto higher ground. This involved constructing a new alignment, including a new 7-span PSC girder bridge over the Koa River, while the existing track was raised and fortified with additional waterways.

The Impact

Created a flood-resilient, all-weather MGR system, permanently fortifying the lifeline of a super thermal power plant and preventing future operational shutdowns due to flooding.

Versatility in Civil Engineering: Building Beyond the Rails



Industrial Sidings & Earthworks

Projects: BPCL & BORL, Bina.



cubic meters of earthwork managed in embankment and high banks across both projects.

Innovation: Introduced S-curve methodology as a monitoring tool, earning client appreciation for transparent and effective project control.

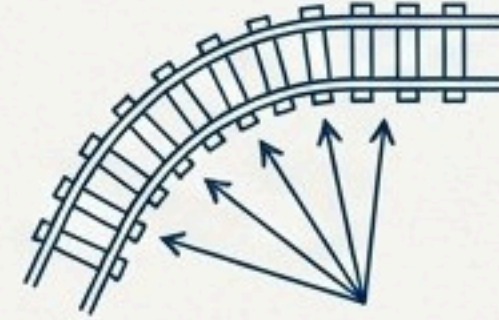


Institutional Buildings

Projects: UPTI & UPFD Projects (World Bank-aided).

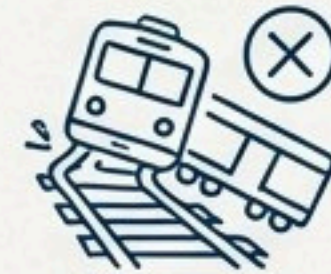
Construction management for polytechnics, forest research institutes, and training schools.

Special Feature: Highlighted the design of Dr. Ambedkar Institute for Handicapped with accessibility features like RCC ramps, grab bars, and vision panels.

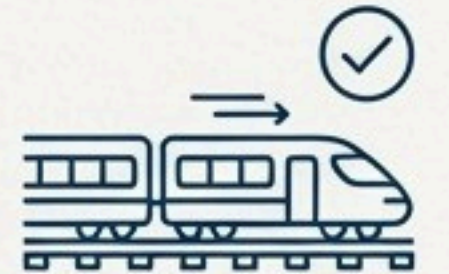


Niche Technical Solutions

Project: Improvement of Track Geometry, Western Railway.

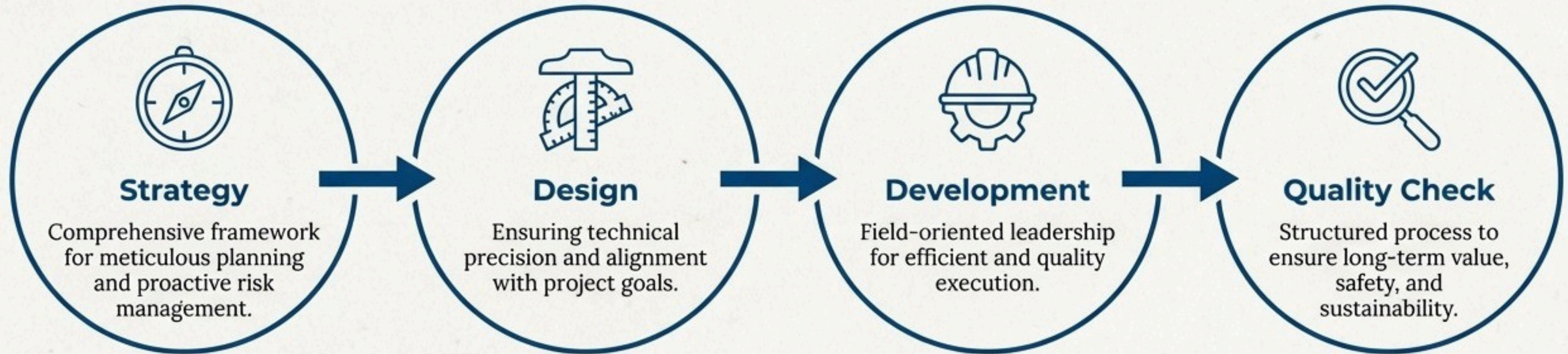


Challenge: Frequent derailments (up to six per month).



Result: Redesigned alignment and executed corrections, resulting in complete elimination of derailments.

The Project Manager's Playbook



“ Meticulous planning, proactive risk management, and result-oriented delivery. ”

“ Known for my calm leadership, technical depth, and hands-on field experience. ”

A Commitment to Process and Integrity

Tendering & Contract Management



Extensive experience in managing the entire tendering lifecycle for high-value projects, from cost estimation and bid documentation (including World Bank approvals) to contract award and administration.

Foundational Reports & Studies



Authored numerous Detailed Project Reports (DPRs), Concept Reports, and Feasibility Studies for major power projects, including those for the Bara, Karchhana, and Jawaharpur Thermal Power Plants.

Vigilance & Accountability



During the Diversion of KBJ Rail Track project, the site was subjected to intensive examination by the Central Tech Examiner's (CTE) Organization of the Central Vigilance Commission. The CTE team appreciated the maintenance of site records, and the case was closed with no adverse findings.

The Culminating Years: International Coordination and Mentorship



Lead Coordinator: Bangladesh Railway Project

Consultancy Services for... Construction of Dual Gauge Railway Line from Bogura to Shahid M. Mansur Ali Station, Sirajganj, for Bangladesh Railway.

This prestigious and technically challenging project demanded close coordination, meticulous planning, and cross-border collaboration, offering enriching exposure to international standards of project management.



Business Development

Responsible for preparation and submission of Expressions of Interest (EOIs) and Requests for Proposals (RFPs).



National Coordination

Coordinated several ongoing projects spread across the country through RITES' various regional project offices.



Mentorship

Concluded career with immense satisfaction from mentoring younger colleagues and witnessing the fruition of long-standing institutional efforts.

A Lifetime of Expertise, Still in Motion

Leveraging over three decades of experience to advise on some of India's most significant ongoing infrastructure projects.



Chief Resident Engineer (RITES in GC)

For Gujarat Metro Rail Corporation (GMRC) on the Ahmedabad Metro Rail Project Phase II, overseeing 6.478 km of elevated viaduct and 5 stations.

Contract Management Expert (Egis India)

For Northern Railway's Construction Organisation, providing senior-level expertise.

Chief Sector Expert (Civil) (Aarvee Associates)

For North Eastern Railway, advising on EPC tendering, technical vetting, and major project documentation.

An Engineer with a Poet's Heart

Inspiration

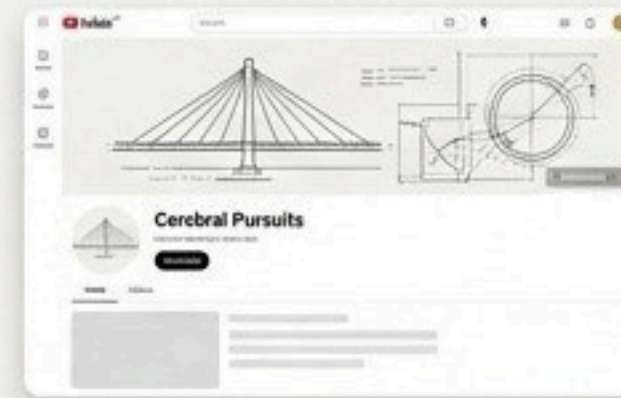
This humble creation is not just a dedication – it is a **bridge across time, a whisper of **love** that refuses to fade... a tribute to the **parents who gave me life**.**



The Family Tapestry

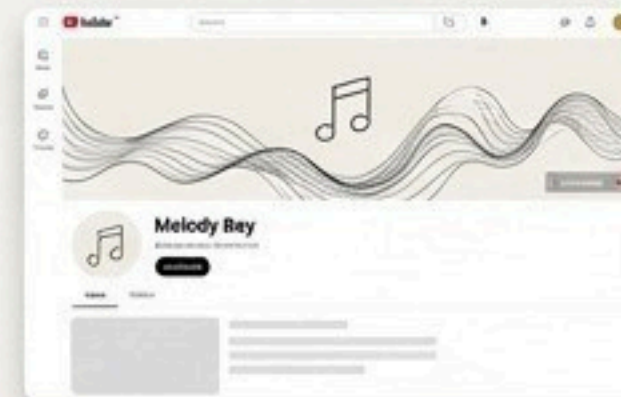
A brief, warm note about his close-knit family: his wife Vibha, a gracious homemaker; and their accomplished daughters Ilika (Master's in Data Science) and Mihika (MBA).

Creative Pursuits



Cerebral Pursuits Where Engineering Finds Its Soul

Featuring series like "Fundamentals of Bridge Engineering".



Melody Bay Where Every Note Finds a Heart

Featuring his original poetry and lyrical compositions.

Brijesh C. Srivastava

Engineering a Better Future



Email: ritesbcs@gmail.com



Website: www.thebridgesh.com



Phone: +91 9452065207

A career dedicated to building the robust, reliable, and resilient infrastructure that forms the backbone of national progress. Available for high-level consultancy and expert advisory roles.